

# WORKPLACES

## REIMAGINED



# WORKPLA

# ACES

## **CONTENTS**

DAY USE LOCKERS

MOBILE ISLANDS

MOVABLE WALLS

# REIMAGINED

A modern office interior featuring modular lockers. The lockers are built into a wall, with some open compartments showing shelves and a cushion. The scene is lit by a pendant lamp, and the background is a dark, textured wall. The image is overlaid with a large, dark blue diagonal shape that frames the text.

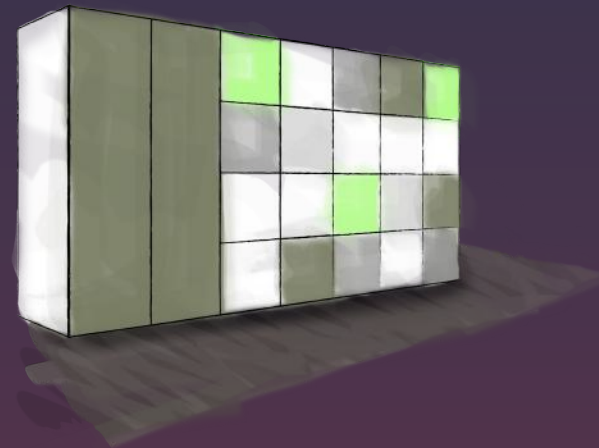
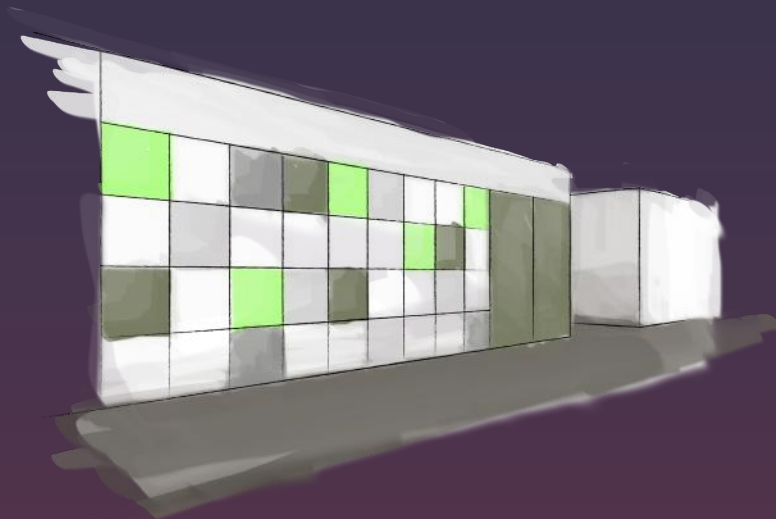
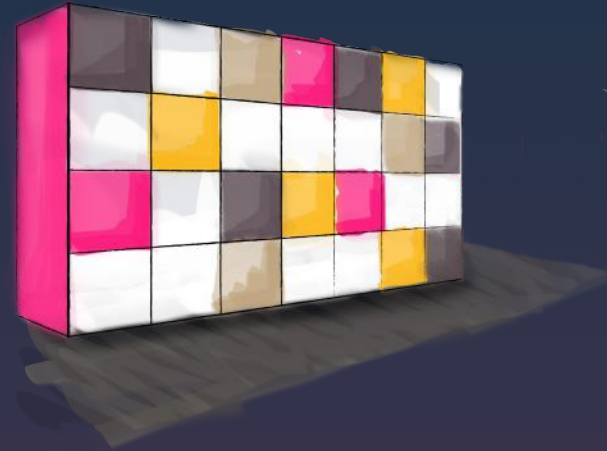
# DAY USE LOCKERS

**The building blocks for personal storage in a flexible and modular work environment.**

Whether it's a built-in wall, a wall partition, or an island, Day Use Lockers serve as the building blocks to create your dynamic space. With personal space at a premium, keep your offices open, collaborative, and customized to make a positive impact on your employees' work life.



**REIMAGINED**



**BUILT-IN WALL**

**WALL PARTITION**



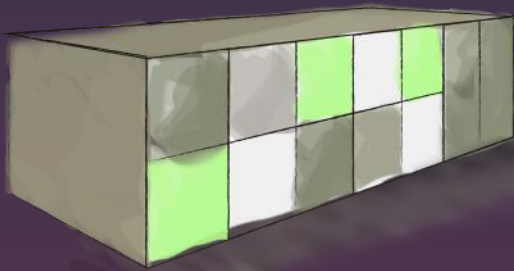
# DAY USE LOCKERS

## REIMAGINED



### DAY USE LOCKERS

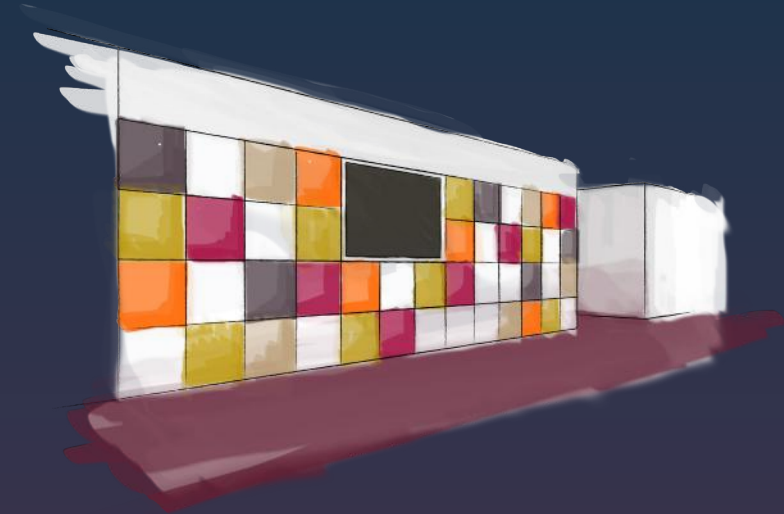
Personal storage space may appear to be shrinking with open and collaborative office environments, but Day Use Lockers can make the most of that valuable space for employee storage. Besides building into the wall, a bank of lockers can divide open spaces into different zones with wall partitions or islands that are modular, creating necessary collaboration zones.



### THE STORAGE WALL

Not all storage needs to be personalized, but wardrobe and supplies need a place to live, too! A storage system that serves as a divider of spaces helps keep essential materials right where you need them.

**ISLAND**



## WALL OF AWARENESS

Developed around personal storage, your wall of awareness helps project key messaging that is important to your company,



## SPONTANEOUS MEETING

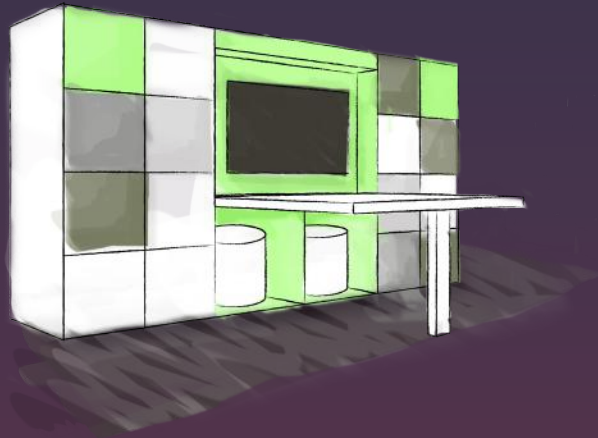
Designed to align with the transformative and collaborative office environment – spontaneous meeting spaces integrated into the environment can be where your best ideas are generated.

## BUILT-IN WALL

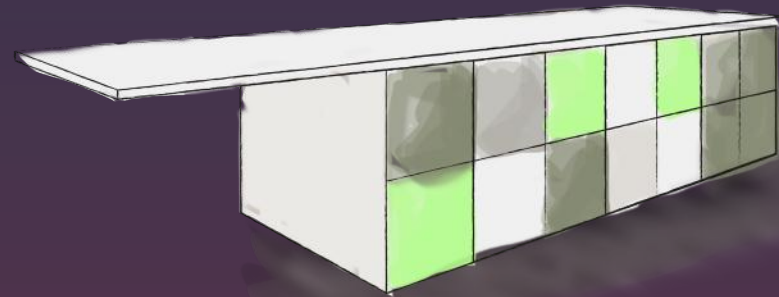


# DAY USE LOCKERS

## REIMAGINED



WALL PARTITION



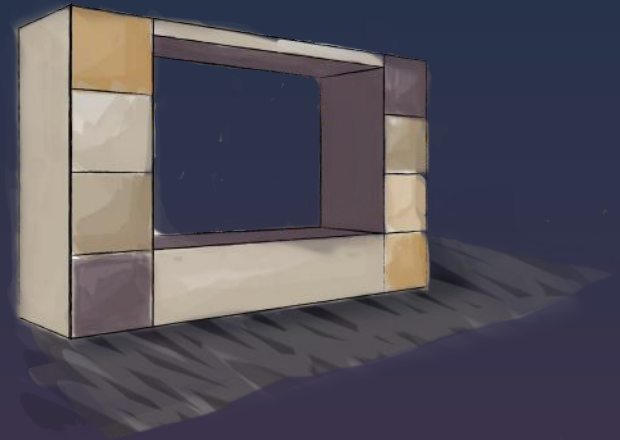
ISLAND

# WALLS, PARTITIONS OR ISLANDS

Your space; adapted for what you need.



**BUILT-IN WALL**



**WALL PARTITION**

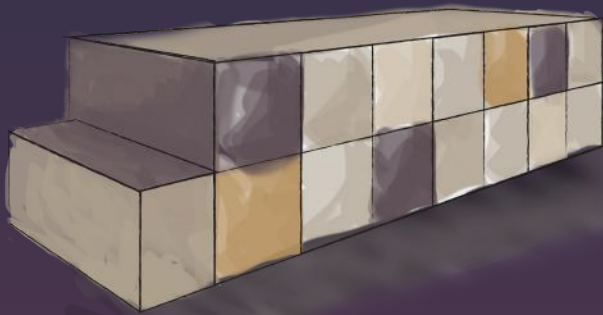


# DAY USE LOCKERS

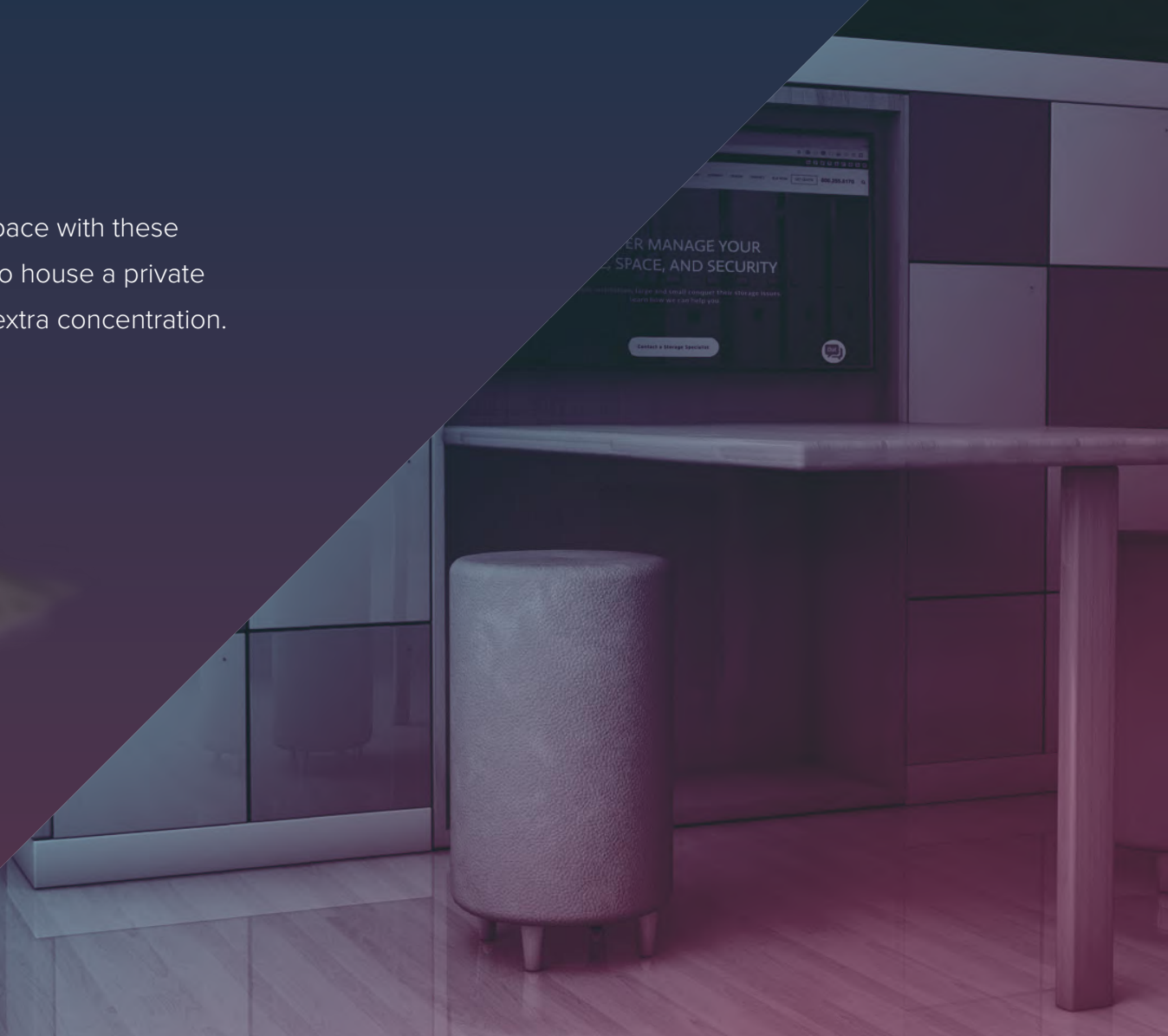
## REIMAGINED

### TAKE-A-SEAT WALL

Take-a-seat away from the traditional workspace with these seating concepts that provide the flexibility to house a private conversation, or the perfect environment for extra concentration.



ISLAND





# MOBILE ISLANDS

**The new ‘watercooler’ of the office for spontaneous meeting and collaboration, while providing storage solutions for all.**

Mobile Islands allow you the flexibility to provide the right custom storage space for personal or office needs as a central hub to the office. It creates spontaneous meeting space for collaboration, as well as a tidy, organized and visually attractive space that every employee will be productive in.

**REIMAGINED**

# BUILD YOUR ISLAND

Attractive and functional to enhance productivity.

**STARTER STORAGE SECTION**



**DAY USE LOCKER AISLE**



**OPEN WARDROBE AISLE**



**SPONTANEOUS MEETING SPACE**



**STORAGE CABINET ISLAND**



**COFFEE CREDENZA AISLE**





# MOBILE ISLANDS

## REIMAGINED

### STORAGE IN PLAIN SIGHT

Mobile Islands create the new 'watercooler' space of your office environment. Design to your custom counter-top height or higher, and personalize each aisle to your specific needs.





# MOVABLE WALLS

**The new way of creating the most modular and flexible workplace environment**

Movable walls provide you the flexibility and modularity that all offices need with growing teams and changes in the way people work. Seamlessly convert the same space from a private workspace to a large collaborative meeting area with movable walls.

**REIMAGINED**

## MOVABLE WALLS

Integrating moveable walls allows your workspace to adapt to your ever changing needs. Move the walls together to create more private conversations, or open them up to allow for large team meetings and gatherings.

These are more than just walls. With integrated media displays, flip-down tables, lighting, cubbies, seating, whiteboards and much more – they create the modular office of today and the future, adjusting your workspace on the fly.





# MOVABLE WALLS

## REIMAGINED



## Innovate your office with the Spacesaver Workplaces Reimagined Suite.

---

After more than 40 years of working with business professionals, we know that providing safe, accessible, and well-organized storage is at the core of any workplace's mission, and we're here to help. Our team of storage experts can assist you in creating an innovative storage solution that fully integrates with your building's unique characteristics to maximize space, protect materials, increase efficiency, and ultimately improve and expand the services your business provides.

Take the first step toward reimagining your workplace. Contact our experienced and knowledgeable team today to arrange your free, no-obligation space consultation.

**800.492.3434 | [www.spacesaver.com/reimagined](http://www.spacesaver.com/reimagined)**



Spacesaver Corporation  
1450 Janesville Avenue  
Fort Atkinson, WI 53538-2798  
1-800-492-3434  
[www.spacesaver.com](http://www.spacesaver.com)

Spacesaver Corporation is a subsidiary of KI.

KI is a registered trademark of Krueger International, Inc.

Spacesaver is a registered trademark of Spacesaver Corporation.

© 2018 KI and Spacesaver Corporation. All Rights Reserved. Litho in USA. SSC/DEL WorkplacesReimagined\_0218\_broch\_BUS



KI  
1330 Bellevue Street  
P.O. Box 8100  
Green Bay, WI 54302-8100  
1-800-424-2432  
[www.ki.com](http://www.ki.com)